

# Our Services

**WATTCROP**  
SOLAR PV | WIND | ENERGY STORAGE

[www.wattcrop.com](http://www.wattcrop.com)  
[info@wattcrop.com](mailto:info@wattcrop.com)

## A few words about WattCrop



Wattcrop is an award-winning renewable energy company, recognised for its innovation and strong track record. Our ambition is to become a top-tier, technology led Independent Power Producer (IPP) in multiple European jurisdictions. The company was founded by industry experts bringing years of experience into practice and successfully navigated its first Joint Venture with Macquarie GIG which led to the development of 1,2GW of Solar PV and 1GW/4GWh BESS assets in Southeast Europe.

Being true to our vision of a sustainable green transition for all we continuously invest in knowledge generation and dissemination. Backed by founding members from across Europe, the company's global perspective and diverse expertise set it apart as a forward-thinking industry player.

Wattcrop expanded its operations to include a services arm that provides engineering and consulting support across the entire renewable energy project lifecycle. Our team brings expertise across all major renewable energy technologies, along with specialised services for grid related matters, including high voltage (HV) systems. Leveraging on the collective experience and industry expertise of our team we managed to co-create best practices in the sector and raise important issues for discussion, radically influencing existing development methods in our target markets.

### Our Mission

To develop and construct projects with respect to the environment, striving to protect and enhance biodiversity, in harmony with people and the local communities, delivering a sustainable future for all.

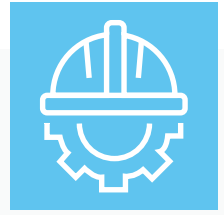
### Our Commitments

To prioritise our strong cooperation with the local communities and the people.

To develop and construct in a sustainable way with strict quality controls in every stage.

Believe in improvement of life quality from ethical entrepreneurship and sustainable development.

Commit in the protection, preservation and enhancement of the environment prioritising it against profits.



# Technical Services

## Project Development Advisory Services

*Optimizing assets, minimizing risks from development to construction.*

- ➔ Project Licensing Due Diligence
- ➔ Licensing & Development Support
- ➔ Plant Yield Assessment
- ➔ Grid Applications
- ➔ Technical 3D Plant Design & Specifications
- ➔ Plant Design & Performance Optimization
- ➔ Technical Due Diligence

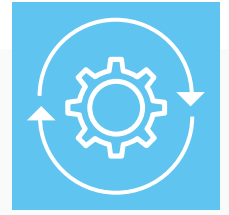
## Engineering Services

*Enhancing efficiency, ensuring safety from planning to execution.*

- ➔ Topographical / Land Surveys
- ➔ Hydro / Flood studies
- ➔ Environmental Studies & Reports
- ➔ Special Ecological/Phytotechnical Studies
- ➔ Grid Connection Studies, HV / MV Works, Applications, Substation Licensing
- ➔ Supplier Selection & Procurement Management
- ➔ Construction Management
- ➔ On-Site Health & Safety





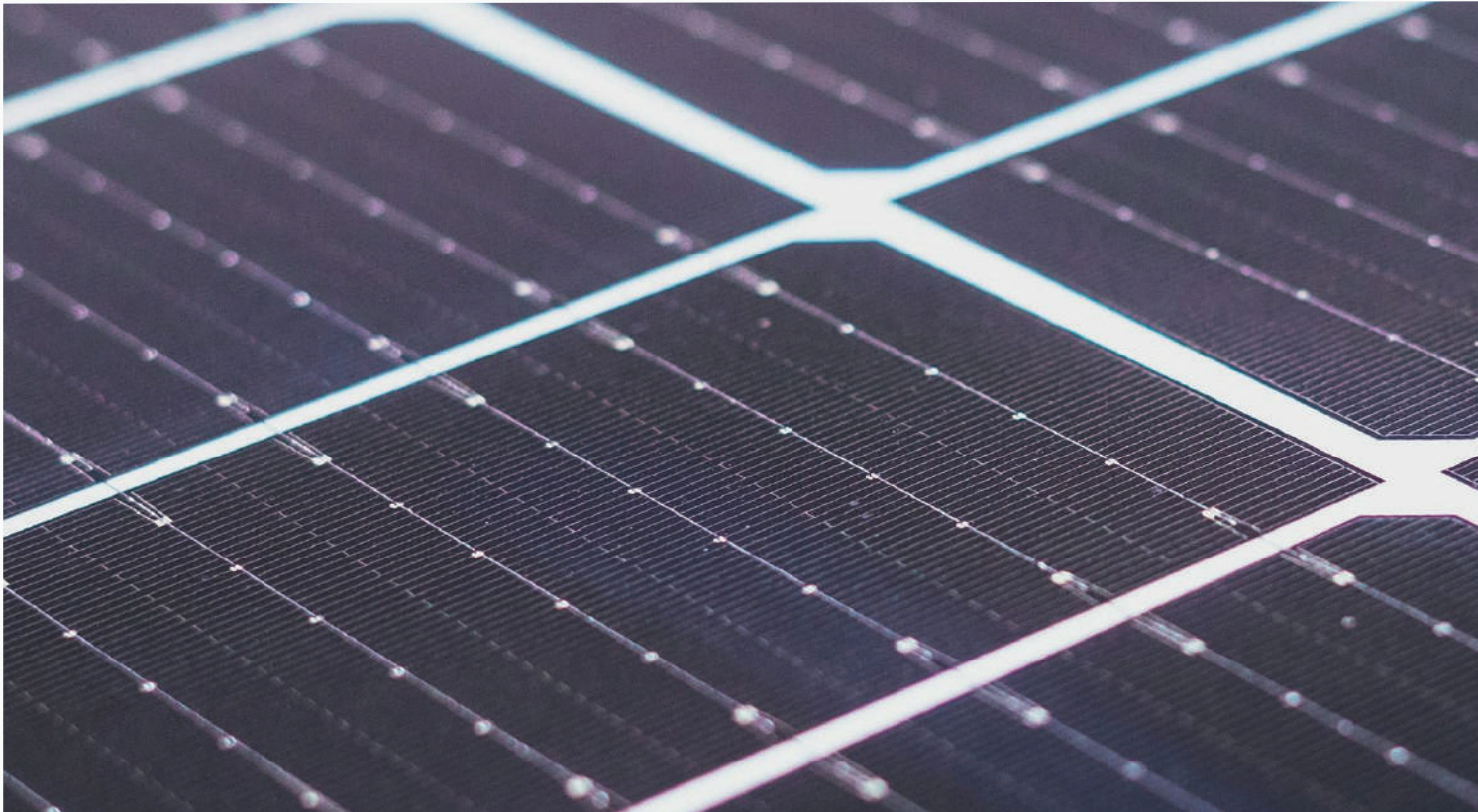


# Asset Management

## Technical Asset Management

*Supervising & controlling asset's production and performance.*

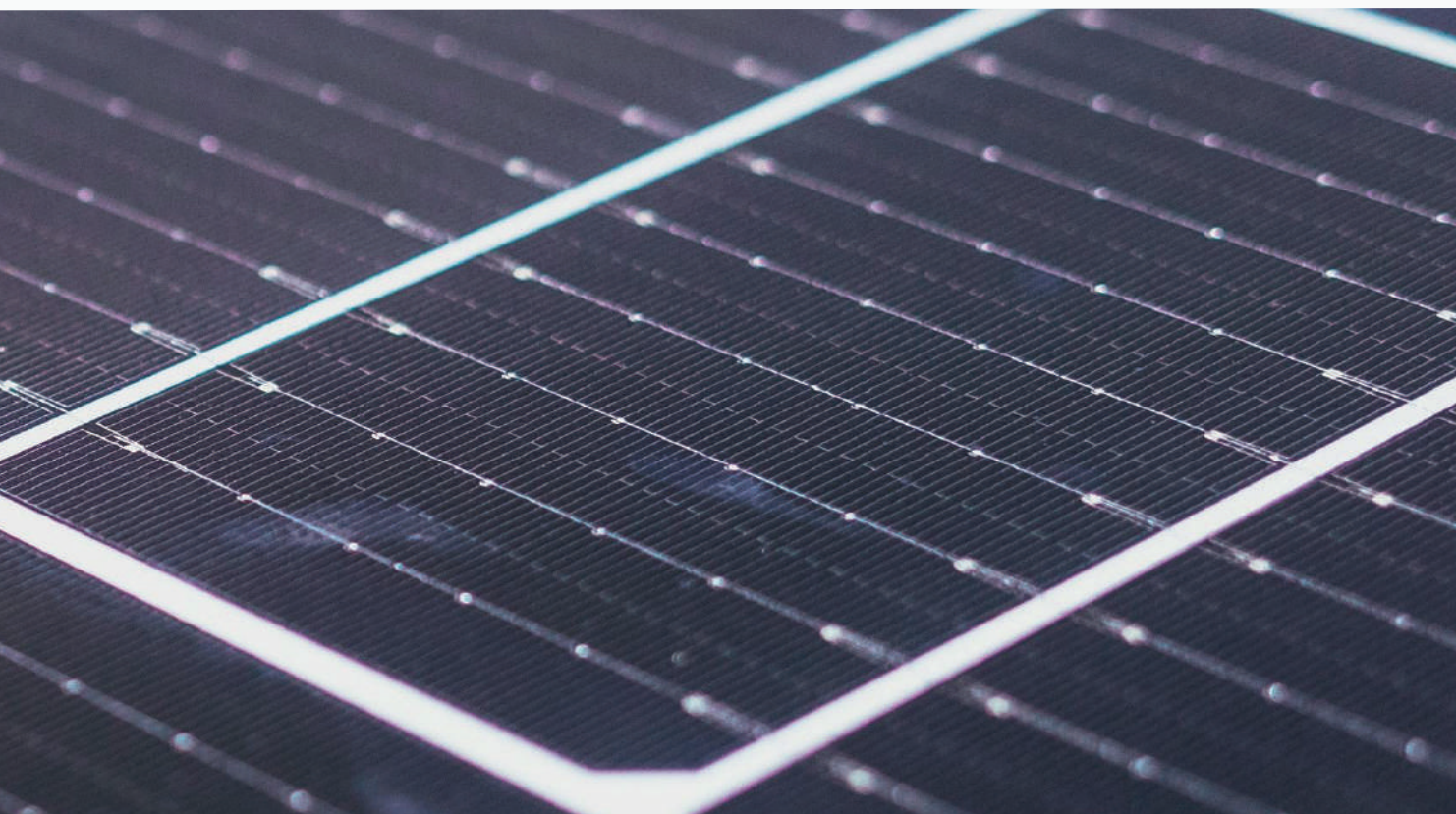
- ➔ Plant Monitoring
- ➔ Reporting
- ➔ Scheduled Site Visits & Inspections
- ➔ Site Access & Security Monitoring
- ➔ PM & CM Management
- ➔ Asset Performance Optimisation
- ➔ HSE Control & Compliance
- ➔ Planning & EIA Compliance
- ➔ Claim Assistance
- ➔ Cybersecurity & Data Management



## Commercial Asset Management

*Comprehensive management of the financial, contractual, and administrative aspects of renewable energy assets.*

- ➔ SPV Management
- ➔ Accounting & Bookkeeping
- ➔ Company Secretary Services
- ➔ Contract Management
- ➔ Payment Processing
- ➔ Revenue & Cashflow Management
- ➔ Debt & Financial Reporting







## Operational & Maintenance Services

*Ensuring that your energy assets operate sustainably, safely, and economically.*

- ➔ Electrical & Mechanical Services
- ➔ Land Management
- ➔ Monitoring & Digital Management
- ➔ HSE Management & Compliance



## High/Medium Voltage Substations



### MV/HV Substation Automation & Commissioning

*Detailed system integration and testing.*

- ➔ Detailed Design & Engineering
- ➔ Erection of the Electrical Equipment
- ➔ Licensing Procedures (in compliance with client/IPTO requirements)
- ➔ Testing & Commissioning
- ➔ Procurement of the Necessary Top-Quality Equipment
- ➔ Handover to the Client
- ➔ Substation Automation Systems Programming (SCADA, Relays, RTUs)

## Operation and Maintenance

*Ensuring optimal performance, minimal downtime, and long-term asset integrity.*

- ➔ On-Call Services
- ➔ Remote Support & Monitoring
- ➔ Preventive Maintenance
- ➔ Yearly Maintenance
- ➔ Storage & Spare Materials Management
- ➔ Technical Training of Personnel

## Supervision and Management

*Ensuring projects are delivered on time, on budget, and in compliance with all technical and regulatory standards.*

- ➔ Project Management
- ➔ Site Management
- ➔ Construction / Commissioning Supervision
- ➔ Handover Support
- ➔ Client Technical Consulting



# W



**WATTCROP**  
SOLAR PV | WIND | ENERGY STORAGE

**GREECE**  
25th Martiou 33,  
Ptolemaida, 50200

**LONDON - UNITED KINGDOM**  
3 Waterhouse Square  
138-142 Holborn  
London EC1N 2SW

**CONTACT US:**  
+30 24630 25240

**SEND US AN E-MAIL:**  
[info@wattcrop.com](mailto:info@wattcrop.com)

**VISIT OUR WEBSITE:**  
[www.wattcrop.com](http://www.wattcrop.com)